



**PM Consultancy, Solutions & Training**

**Sole Primavera Representative In Egypt & KSA**  
الوكيل الوحيد لبريمافيرا في مصر و السعودية

**Authorized Primavera Representatives**  
<http://www.primavera.com/purchase/rep.s.asp>



**project success = business success™**

---

# Primavera Products Details

---



Primavera Project Planner for the Enterprise™ (P3e™) is a comprehensive, multi-project planning and control suite of software, built on Oracle and Microsoft SQL Server relational databases for enterprise-wide project management scalability.

P3e can be implemented by itself, in workgroups, or even on a company's Intranet. It facilitates exacting project management regardless of the size or scope of your enterprise. Whether you have just one project on a laptop, or thousands on a corporate server, P3e offers a total relational picture of project status.

P3e's straightforward interface ensures that it is easy to learn and use. Rich analysis and reporting capabilities are complemented by an extensive Project Website and companion products for making visible the progress made on your projects.

**Imagine your projects and people aligned with your business strategy.**



The success of a company depends upon the success of not just one project, but every project. Whether launching a new product to market, building a new facility or constructing a new roadway, a project is only successful when it positively affects a company's bottom line.

To achieve business success, organizations must assign the appropriate personnel to the right project, connect project participants, account for time and expenses accurately, invest in developing best practices and continuously evaluate projects and their performance against goals. Aligning projects with strategic objectives enables resource optimization and greater control over multi-project efforts.

Discover the benefits of Primavera's enterprise project management solutions:

- ▶ **Value Creation** : Maximize project investments
- ▶ **Project Visibility** : Monitor portfolio performance
- ▶ **Velocity** : Increase speed and efficiency of project execution
- ▶ **Repeatability** : Achieve repeatable project success

### **Role-based functionality facilitates collaboration**

Project goals can be missed when team members fail to collaborate on important project issues. By providing role-appropriate views, everyone has the right information at the right time to make the right decision. "What You See Is What You Need" (WYSIWYN™) delivers the information each member needs in the best format possible to automate their activities.



### **Enterprise Suite Components:**

P3e is a complete suite of components not only one tool. Each component addressing a specific role and functionality in the PM organization. Primavision™ Portfolios, Primavision™, Project Manager™, Portfolio Analyst®, Progress Reporter™, Methodology Manager™ and Primavera® Mobile Manager.

### **Progress Reporter: (for project participants)**

A web-based program that connects project team members across projects, throughout an enterprise. With Progress Reporter, your project team can easily enter time, progress, monitor and update schedules, alert you to issues or conflicts, submit revision estimates, and communicate new requirements, all without any software training.

### **Portfolio Analyst: (for executives, senior managers, and project analysts)**

A program that provides unparalleled project summary and tracking information through a rich set of graphics, spreadsheets, and reports. The Project Portfolio wizard groups together any number of projects, based on project attributes or hierarchy, for comparison and analysis. Portfolio Analyst's interactive interface allows quick drill-down to see information at any level of detail for clear presentation and discussion.

### **Primavision: (for executives, managers, and project professionals)**

Web-based delivery of project portfolio insight that provides a comprehensive, easy-to-use view of your enterprise. Developing high-level schedules, allocating resources, establishing priorities, and communicating deliverables are the key elements for successful projects and achieving quick time to market.



**Introducing the new project management standard designed specifically for construction.**



Staying on budget and on schedule means staying in control. Projects must be planned quickly to seize prime business opportunities and to keep costs down. But they must also be executed well to assure success and the longevity of your company.

P3e/c™ for Construction is the tailored version of P3e for the specific needs of the construction industry. It empowers engineering and construction professionals to mitigate project risk through powerful schedule analysis, accurate cost forecasting and streamlined coordination among designers, contractors, and owners.

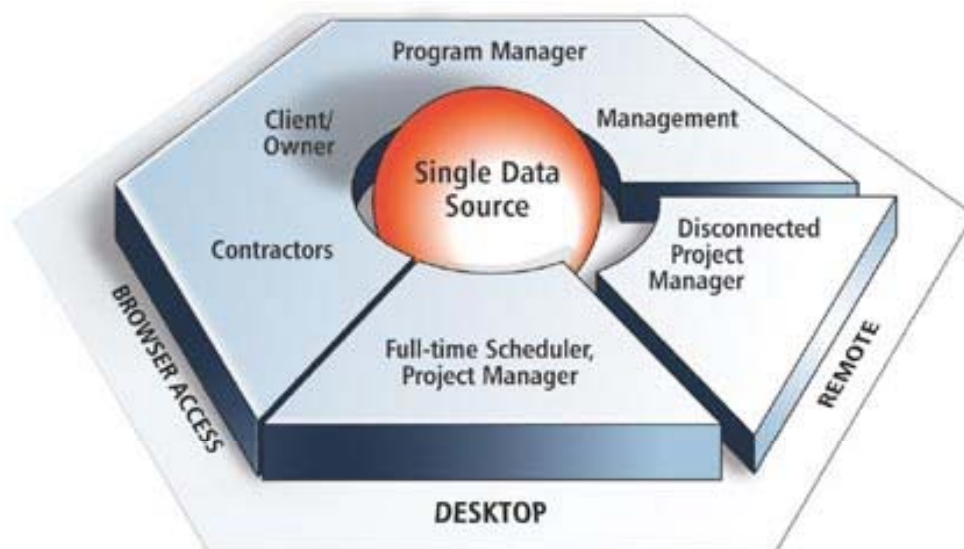
Discover the benefits of Primavera's new dimension in Construction Project Management.

- Improved scheduling and analysis to stay on target.
- Easy project planning and implementation.

- Construction-specific reports, layouts and filters.
- Better decision making through collaboration.

## **Many Players. Many Perspectives.**

Project management is truly a team sport. Owners, engineers, schedulers, project managers, business unit managers, contractors, and subcontractors need to communicate and collaborate with speed and efficiency to get the job done, and done right.



P3e/c provides centralized access to all project information by multiple users at the same time. It's an integrated solution with web-enabled, client/server, and desktop software that provides role specific capabilities to satisfy each team member's needs, responsibilities and skills. P3e/c simplifies contractor schedule integration, enhances collaboration, and has the versatility to support teams who manage single projects or complex programs.

## **P3e/c for Construction Suite Components**

Just as P3e, P3e/c also utilizes a complete set of components; Project Manager™, Primavision™, Methodology Manager™, Primavera® Mobile Manager and Project Website.



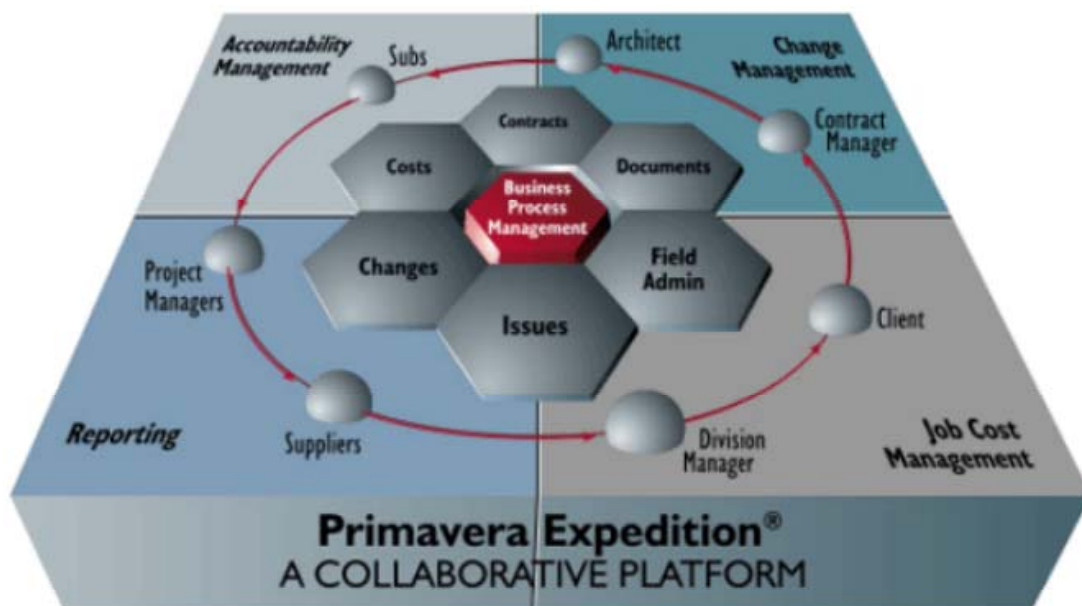
**Introducing a new era of project control.**

**Expedition gives you the role-based visibility you need, by providing a dashboard view, to ensure clear accountability: you will always see who is responsible for what, and when.**

**Expedition provides change management power to ensure that changes are resolved, payment is made and claims are avoided.**

**Expedition's powerful reports provide you with the visibility you need to control all of your projects.**

**Expedition gives you the job cost management functions to keep your project on budget.**



Controlling your construction project's schedule, budget, and deliverable is vital in assuring the success of your projects and the future of your business. But this can be challenging as every unbudgeted change or delay in schedule can result in increasing costs, risk and claim exposure.

Primavera Systems, the leader in project management solutions for over 20 year, delivers a browser-based construction project controls solution specifically developed to increase efficiency and speed, while reducing schedule delays and risk: Primavera Expedition® 9.0.

With Expedition® 9.0's collaborative platform you can immediately respond to questions, issues, changes and daily events. Project team members have instant and easy access to the latest, most accurate project information including drawings, answered RFIs, and approved changes.

- ▶ Amazing Power. Unrivaled Ease
- ▶ Manage Multiple Projects in Multiple Locations
- ▶ Role-based Project Control
- ▶ Gain Visibility
- ▶ Change Happens: Manage It
- ▶ Forecast Costs and Simplify Contract Control
- ▶ Integrate with Your Other Project Control Tools

**Expedition 9.0 is the latest generation of the world's leading construction project management solution.** Expedition provides you with accountability, change management, job cost control, and reports management to ensure that your projects achieve successful on time and on budget completion. With over a decade of development and feedback from thousands of users, Expedition is the industry's preferred project control solution of choice.

**Primavera Expedition: Amazing power. Unrivaled ease.**

Do you want to take on more projects without compromising progress or quality? You can with Expedition. With superior job cost management, comprehensive change management, powerful reporting, and a clear understanding of who is accountable, you will be confident in your ability to respond rapidly while providing an accurate history of events should a claim arise.

**Manage multiple projects in multiple locations.** Expedition delivers true multi-project power, giving project managers the ability to establish consistency and efficiency across multiple projects and multiple locations. Unlike other solutions that create separate databases for projects, Expedition places all data into one, central and secure database. It's

never been easier to identify inefficient patterns, unfavorable trends or opportunities to cut costs in projects and programs. The database enables you to group, analyze and compare project performance by projected costs, region, and project manager. You are armed with the information you need to make better decisions and determine which type of projects to pursue in the future.

**Role-based project control.** Expedition facilitates team interaction. Role-based views display the information that is relevant to each project participant. Every project team member will have the information they need to keep the project going. Action lists, alerts, and turnaround graphs help Project Managers immediately identify who is holding up the process, when it was required and if it will impact the budget or schedule.



**Gain visibility.** With Expedition, accurate and up-to-date information is always accessible. Expedition's powerful reports provide you with the visibility you need to control all of your projects. Track budgets, cost variances and project changes from multiple projects to analyze comparative trends and cause/effect among projects. This enables your to maximize efficiency while minimizing project costs, risks and safety issues.

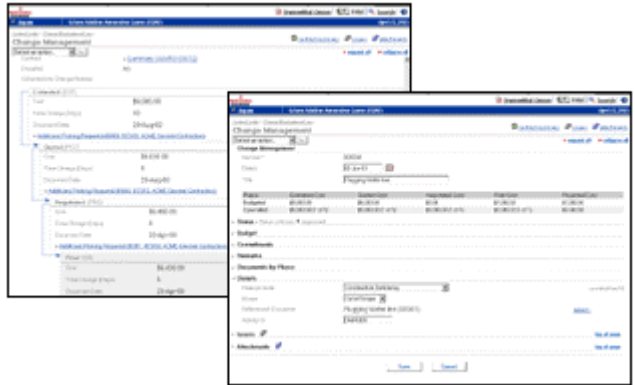
**Change happens: Manage it.** Expedition provides change management power to assure changes are resolved, payment is made and claims are avoided. Instantly reflect the cost or schedule impact of any change on your project and identify which contractors are affected. With Expedition, you are prepared for the unexpected and have the power to negotiate cost and schedule details to final resolution.

**Forecast costs and simplify contract control.** With Expedition you can track budgets, review commitment documents and record requisitions and invoices as they are received. The Cost Worksheet automatically collects and summarizes detailed cost elements from contracts, requisitions, changes and purchase orders and dynamically

A screenshot of the Expedition software interface showing a detailed cost worksheet. The table has multiple columns and rows, displaying financial data. The columns include various cost elements and their corresponding values. The table is organized into sections, with a summary row at the bottom. The data is presented in a clear, structured format, allowing for easy analysis of project costs.

displays this in one easy-to-read form. Now you have the power to understand where project costs are today, and more importantly, where costs are going tomorrow.

**Integrate with your other project control tools.** As part of Primavera's solutions for the construction industry, Expedition integrates with P3e/c™ for Construction. With regular progress updates, you can identify possible schedule conflicts and keep your projects moving forward.





SureTrak® Project Manager is simply project management software that yields professional results quickly and easily. It is the perfect combination of ease-of-use, power and affordability, and it is ideal for resource planning and control on small- to medium-sized projects. Anyone can learn to use SureTrak, and it is especially beneficial to those who only have a few hours each week to update and manage their projects.

**SureTrak 3.0's new features and functionality:**

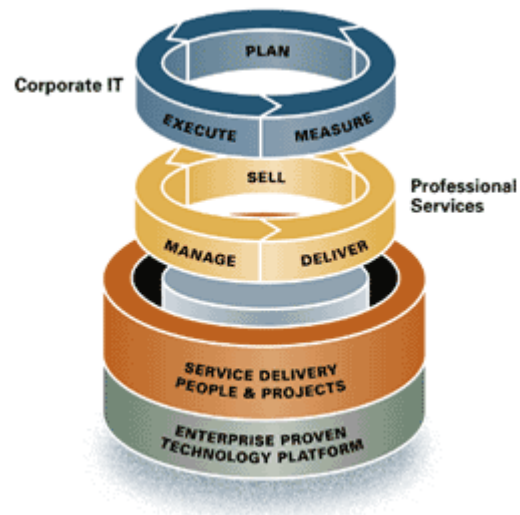
- Improved look and feel for more streamlined navigation
- Customized resource layouts for more effective and efficient reports
- Easier remote updates with the Primavera Post Office
- Interactive filters for on-the-fly reporting and analysis
- Intuitive indent/outdent capabilities for easier project outlining
- Compatibility with Primavera Project Planner® (P3) and Primavera Expedition®
- Enhanced 32-bit performance

Update. Analyze. Forecast. Communicate with professional quality reports. SureTrak is what you need to do it all, and do it easily. It's the perfect combination of ease-of-use, affordability and power. SureTrak 3.0 - Simply the best way to manage all of your projects.

## Primavera Evolve®

Primavera's leadership in service delivery solutions reflects a deep understanding of the problems and opportunities faced by service organizations. We've leveraged this knowledge into rich, industry-leading product functionality, including:

- ▶ Portfolio Management
- ▶ Opportunity Management
- ▶ Resource Management
- ▶ Time and Expense Management
- ▶ Enterprise Project Management
- ▶ Resource Management
- ▶ Financial Management
- ▶ Knowledge Collaboration
- ▶ Business Intelligence



The Primavera Evolve® solution is - and always has been - designed specifically for service delivery optimization. Flexibility is a hallmark, as both technology and business needs constantly change. At the core of our service delivery platform is a highly adaptable, secure, Internet-based architecture.

---

*For more information on any product, you may download the product brochures from Promastar's website or contact us directly for any assistance.*



06 Osman towers, diplomats Bldg, 1<sup>st</sup> floor, flat no. 12  
Telephone : +20 2 5240508 / +20 12 2440990    Telefax : +20 2 5258015    E-mail : info@promastar.com

**w w w . p r o m a s t a r . c o m**